



KCNH1 Polyclonal Antibody

Catalog No	YP-Ab-16435
Isotype	IgG
Reactivity	Human;Mouse;Rat
Applications	WB;ELISA;IHC
Gene Name	KCNH1
Protein Name	Potassium voltage-gated channel subfamily H member 1
Immunogen	The antiserum was produced against synthesized peptide derived from human KCNH1. AA range:720-769
Specificity	KCNH1 Polyclonal Antibody detects endogenous levels of KCNH1 protein.
Formulation	Liquid in PBS containing 50% glycerol, 0.5% BSA and 0.02% sodium azide.
Source	Polyclonal, Rabbit,IgG
Purification	The antibody was affinity-purified from rabbit antiserum by affinity-chromatography using epitope-specific immunogen.
Dilution	WB 1:500-2000;IHC-p 1:50-300; ELISA 2000-20000
Concentration	1 mg/ml
Purity	≥90%
Storage Stability	-20°C/1 year
Synonyms	KCNH1; EAG; EAG1; Potassium voltage-gated channel subfamily H member 1; Ether-a-go-go potassium channel 1; EAG channel 1; h-eag; hEAG1; Voltage-gated potassium channel subunit Kv10.1
Observed Band	110kD
Cell Pathway	Cell membrane ; Multi-pass membrane protein . Nucleus inner membrane ; Multi-pass membrane protein . Cell projection, dendrite . Cell projection, axon . Cell junction, synapse, presynaptic cell membrane . Perikaryon . Cell junction, synapse, postsynaptic density membrane . Early endosome membrane . Perinuclear KCNH1 is located to NPC-free islands.
Tissue Specificity	Highly expressed in brain and in myoblasts at the onset of fusion, but not in other tissues. Detected in HeLa (cervical carcinoma), SH-SY5Y (neuroblastoma) and MCF-7 (epithelial tumor) cells, but not in normal epithelial cells.
Function	disease:Overexpression of EAG may confer a growth advantage to cancer cells and favor tumor cell proliferation.,domain:The segment S4 is probably the voltage-sensor and is characterized by a series of positively charged amino acids at every third position.,function:Pore-forming (alpha) subunit of voltage-gated non-inactivating delayed rectifier potassium channel. Channel properties may be modulated by cAMP and subunit assembly. Mediates IK(NI) current in myoblasts.,similarity:Belongs to the potassium channel family. H (Eag) subfamily.,similarity:Contains 1 cyclic nucleotide-binding



domain.,similarity:Contains 1 PAC (PAS-associated C-terminal)
domain.,similarity:Contains 1 PAS (PER-ARNT-SIM) domain.,subunit:The
potassium channel is probably composed of a homo- or heterotetrameric complex
of pore-forming alpha subunits that can associate with modulating beta subunits.
Heteromultimer with K

Background

Voltage-gated potassium (Kv) channels represent the most complex class of voltage-gated ion channels from both functional and structural standpoints. Their diverse functions include regulating neurotransmitter release, heart rate, insulin secretion, neuronal excitability, epithelial electrolyte transport, smooth muscle contraction, and cell volume. This gene encodes a member of the potassium channel, voltage-gated, subfamily H. This member is a pore-forming (alpha) subunit of a voltage-gated non-inactivating delayed rectifier potassium channel. It is activated at the onset of myoblast differentiation. The gene is highly expressed in brain and in myoblasts. Overexpression of the gene may confer a growth advantage to cancer cells and favor tumor cell proliferation. Alternative splicing of this gene results in two transcript variants encoding distinct isoforms. [provided

matters needing attention

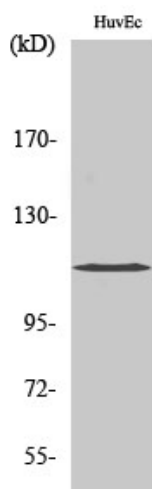
Avoid repeated freezing and thawing!

Usage suggestions

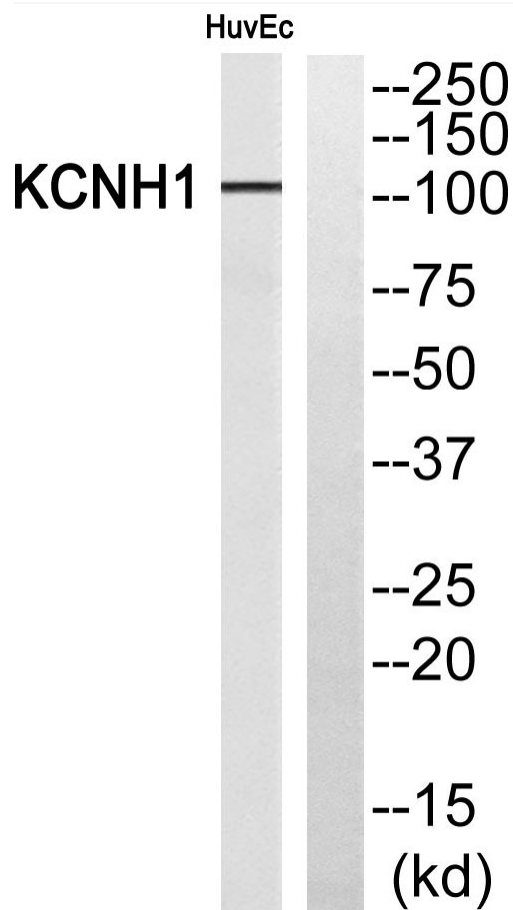
This product can be used in immunological reaction related experiments. For more information, please consult technical personnel.



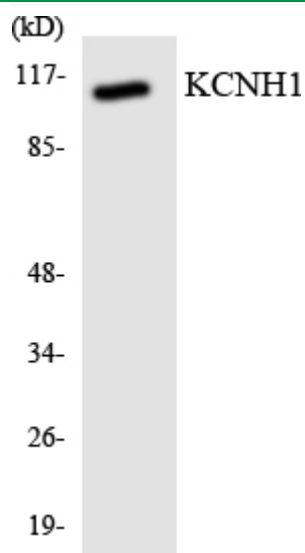
Products Images



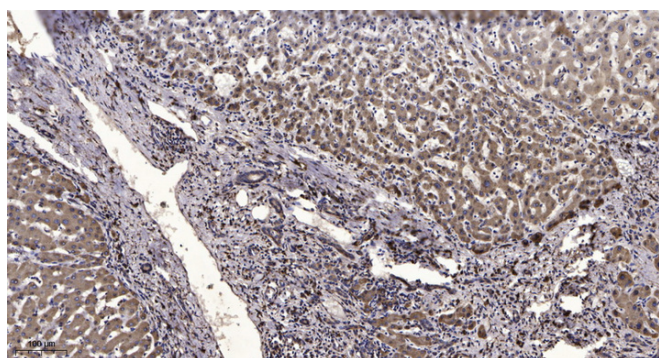
Western Blot analysis of various cells using KCNH1 Polyclonal Antibody diluted at 1:2000



Western blot analysis of KCNH1 Antibody. The lane on the right is blocked with the KCNH1 peptide.



Western blot analysis of the lysates from COLO205 cells using KCNH1 antibody.



Immunohistochemical analysis of paraffin-embedded human liver cancer. 1, Antibody was diluted at 1:200(4° overnight). 2, Tris-EDTA, pH9.0 was used for antigen retrieval. 3, Secondary antibody was diluted at 1:200(room temperature, 45min).